



# INDUSTRIAL & LOGISTICS

## STRUCTURE SOLUTIONS

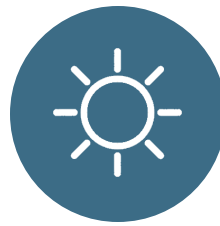




Superior  
Ventilation



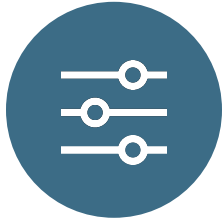
Quick  
Construction



Natural  
Lighting



Heavy-Duty  
Frame



Customizable  
Design



Low Cost  
Per Sq. Ft.



Easily  
Maintainable



Durable  
Covers

## Multiple Foundation Options

Our supplied buildings can be constructed on virtually any surface. With multiple foundation options available, our knowledgeable team can help you choose the best anchoring system tailored to your specific application.

Options Include:

- Concrete Lego Blocks
- Screw Piles & Earth Anchors
- Concrete Slab/Asphalt
- Concrete Piles
- Wooden Posts
- Sea-Can Containers

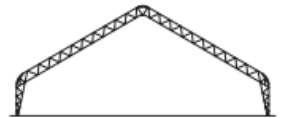
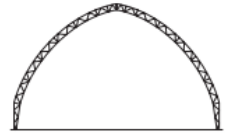
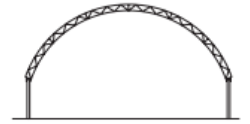






## Building Profiles

We offer various types of buildings that can be made up to 250' wide and any length. Our team can walk you through the process of choosing the right structure to fit your particular industrial & logistics needs whether it be a permanent or temporary project. No matter what weather our harsh North American climate throws at them, our building solutions are always up for the task.



## APPLICATIONS

- Warehouses
  - Loading Bays
  - Vehicle Garages
  - Cargo Buildings
  - Delivery Centers
  - Product Storage
  - Equipment Storage
  - Bulk Storage
  - Goods Storage
- and more!*

**INSTALLATIONS**

**DISMANTLES**

**SERVICE & REPAIRS**

**FULL RECOVERS**

**SITE ANALYSIS**

**DESIGN**



3704 56 Ave NW, Edmonton, Alberta, Canada T6B 3R8

2 Vliet Farm Rd, Asbury, NJ 08802